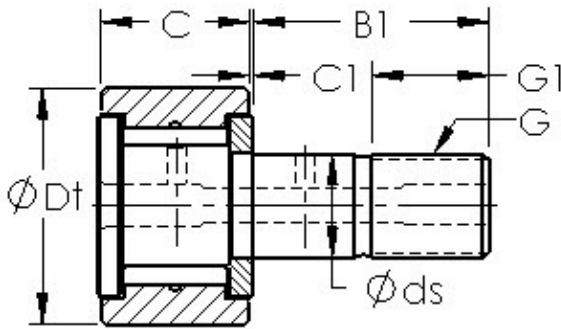




# ROULEMENTS?BEARINGS?Limited



## AST CF40 needle roller bearings

Bearing No. CF40

Bearing Type	Full Complement
Dynamic Load Rating (Cr)	11,500
Static Load Rating (Cor)	21,100
Max Speed (Grease) (X1000 RPM)	2,000
Tire Outer Dia. (Dt)	2.500
Stud Dia. (ds)	1.000
Tire Width (C)	1.500
Tire Washer Width (C1)	0.031
Total Length (B)	3.780
Stud Length (B1)	2.250
Threads (G) - 1-14 UNF	114 UNF
Thread Length (G1)	1.125
Weight (g)	1,098.00
Material - Stud and Roller head: Hardened carbon steel alloy, Needle rollers	52100 Chrome steel or equivalent

CF40 Bearing 2D drawings and 3D CAD models